

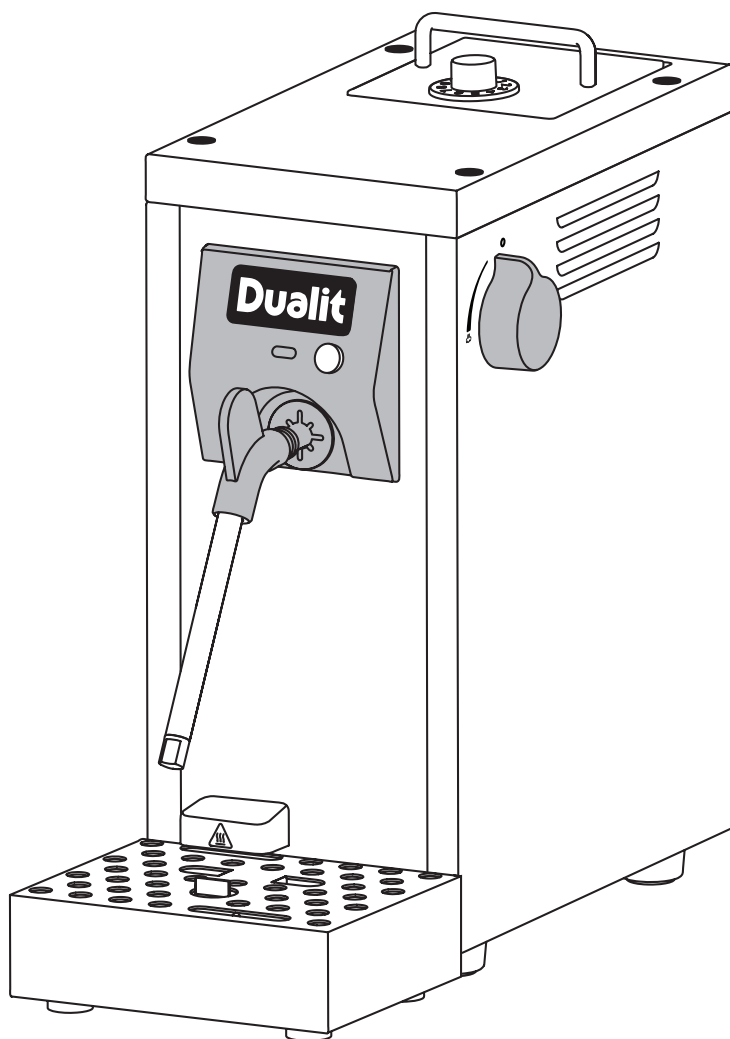


# Milk Steamer

Instruction Manual & Guarantee

# Dualit®

Since 1945



# STEAM AND FROTH YOUR WAY TO PERFECT MILK

No more delayed hot drink orders or waiting to use the steam wand on the coffee machine; our Cino™ milk steamer will change the way your coffee service is run. Our easy to use, compact, freestanding milk steamer is perfect for making cappuccinos, babyccinos, lattes, mochas and hot chocolates.

Creating perfectly steamed and frothed milk, effortlessly and quickly, you will get through hot drinks orders in no time. The Cino's simple, sleek, stainless steel design means it will also be a great addition to your kitchen if you enjoy enjoy coffee shop style coffee at home.



Unpack the box with care, keeping all the packaging materials until you are satisfied everything is present and in working order. Once satisfied remove any tags from the appliance body and recycle the packaging appropriately. Do not remove tags from the cord. You may wish to keep the box to store your appliance.

*All illustrations are for representation only; your model may vary from illustrations shown.*

# CONTENTS

Safety precautions _____	04
Limescale Warning _____	06
Know your Dualit Cino™ _____	08
Set-Up _____	09
Water Filter Replacement _____	10
Before First Use _____	10
Attention - Setting Up _____	11
Indicator Light _____	12
Warming Milk Using Steam _____	13
Frothing Milk _____	14
Cleaning After Each Use _____	15
Cleaning & Descaling _____	16
Troubleshooting _____	19
Guarantee _____	21





# IMPORTANT SAFETY PRECAUTIONS



## READ ALL INSTRUCTIONS

KEEP THESE INSTRUCTIONS FOR FUTURE REFERENCE.

- **THIS IS AN ATTENDED APPLIANCE. Do not leave appliance unattended during use, unplug after each use (risk of fire if an unattended appliance is left operating or plugged in).**

- This appliance must not be used by children younger than 8 years old and persons with very extensive and complex disabilities. Children aged 8-14 years and persons with reduced physical, sensory or mental capabilities or lack of experience and knowledge shall not use this appliance, unless they are supervised and have been given instruction concerning the use of the appliance in a safe way and understand the hazards involved. Children shall not play with the appliance. Cleaning and user maintenance shall not be made by children unless they are older than 8 and supervised. Keep the appliance and its cord out of reach of children less than 8 years old.

### Electrical safety

- Ensure that the voltage of the appliance corresponds to that of the main supply. **Risk of electric shock and fire.**
- **WARNING:** This appliance must be earthed.
- Never use the plug without the fuse cover fitted. Ensure replacement fuse is the same current value as the original. Replacement fuses are available and should be ASTA approved to BS1362.
- Unplug the appliance from the mains and allow to cool before cleaning, maintaining or moving. **CAUTION:** Hot water. For details, please refer to cleaning section. **Risk of fire, electric shock, scalding or injury to persons.**
- Do not operate any appliance with a damaged lead or plug, or after the appliance malfunctions or has been dropped, damaged or cracked in any manner. **Risk of electric shock and fire.**
- In order to avoid a hazard, if the Power Cord is damaged it must, for safety reasons, be replaced by Dualit or an authorised Dualit repairer. Call Dualit's Customer Helpline on +44 (0)1293 652 500.
- We recommend that the appliance is plugged into a socket that has no other appliance connected to it. Failure to do this may cause an overload, trip a circuit breaker or blow a fuse. Preferably the socket outlet should be protected by a Residual Current Device (RCD).

- The Power Cord should not be able to come into contact with hot surfaces. **Risk of fire.**
- This appliance conforms to directive 2014/30/EU CEE regarding electromagnetic compatibility.
- Never touch the Power Cord with wet hands. **Risk of electric shock.**
- The use of accessory attachments not recommended by Dualit **may result in fire, electric shock or injury to persons.**

### General safety

- Do not use appliance for any purpose other than the intended use. **Risk of fire, electric shock, scalding or injury to persons.**
- The use of extension cables not authorised by the manufacturer may cause damage or accidents. **Risk of electric shock.**
- Heating element surface is subject to residual heat after use. **Risk of scalding.**
- This appliance is intended to be used in households and similar applications such as working environments including staff kitchen areas in shops and offices, farm houses, clients in hotels, motels, bed and breakfasts and other residential environments.
- Do not touch the metal parts or its housing when the appliance is in use. **Risk of burns or scalding.**
- Do not lift the appliance up using the Steam Wand. Only hold the appliance body. Unplug and allow to cool prior to moving.
- Do not use in bathroom or outdoors. **Risk of electric shock.**
- Do not place the appliance on a polished wood or permeable surface, it could damage the surface.
- Do not store or use in an appliance garage or under cupboards. **Risk of fire.**
- Do not place on a tray or surface that may collect liquid. **Risk of electric shock.**
- Do not operate on an uneven surface. The appliance must only be operated on a flat, horizontal surface. **Risk of injury.**
- Do not place the appliance over or close to sources of heat such as electric rings, hot ovens or open flames. **Risk of electric shock and fire.**
- Do not use the appliance without water as this may cause damage to the pump/boiler.

- **CAUTION:** When using Milk Jug as edges may be sharp.
- Do not leave the appliance in a room with a temperature below 0°C, as any water remaining in the appliance could freeze and cause damage.
- Do not place hands in direct contact with the metal parts of the Steam Wand. **Risk of scalding.**
- Steam and hot water hazard. Do not get into direct contact with hot liquid and steam. **Risk of scalding.**
- Before refilling the water tank, unplug the appliance from the mains. **Risk of electric shock.**
- Do not overfill the Water Tank.
- Do not use sparkling water (with carbon dioxide).
- Never fill the water tank with hot or boiling water.
- Your machine is fitted with a pressure release valve that dispenses into the Drip Tray.
- Only use the appliance with the Drip Tray correctly located against the front of the machine



- **Warning:** Drip Tray and Drip Tray Cover may be hot due to expelled water or steam. Allow to cool before handling. **Risk of scalding.**

- Ensure Water Filter Holder is removed before descaling solution is placed in the Water Tank. **Risk of contamination or injury.** See descale instructions page 16.
- To be protected against electrical hazards, fire and injury to persons, do not immerse the mains lead, plug or appliance in water or any other liquid. **Risk of electric shock.**
- Turn the appliance off and unplug when not in use. **Risk of electric shock and fire.**
- Condensation may appear on the work surface under the appliance. This is normal.
- Do not use scouring pads or abrasive cleaner on the appliance body. **Risk of electric shock.**
- Do not place the appliance on a metal tray or other metal surface during use. **Risk of electric shock.**
- If there is internal water leakage, do not operate the appliance and unplug it at once in order to avoid electric hazard. **Risk of electric shock.**
- **CAUTION:** To prevent damage to the appliance, do not use alkaline cleaning agents. When

cleaning, use a soft cloth and a mild detergent. **Risk of electric shock.**



### INSTRUCTIONS ON ENVIRONMENT PROTECTION

Do not dispose of this product in the usual household garbage at the end of its life cycle. Please hand it over to a collection point for the recycling of electrical and electronic appliances. The symbol on the product, the instruction of use or the packaging will inform you about the methods of disposal. The materials are recyclable as mentioned on its marking. By recycling, material recycling or other forms of re-utilization of old appliances you are making an important contribution to protect our environment. Please enquire about the community administration for the authorised disposal location.

## SAVE THESE INSTRUCTIONS

### BEFORE FIRST USE

- Read this instruction manual before you start using the Dualit Cino™. It gives you important safety information and will ensure you get the most out of your Dualit product.
- Keep this manual and your proof of purchase in a safe place.
- Don't forget to register your product at [www.dualit.com/register](http://www.dualit.com/register).
- The Dualit Cino™ must be flushed through with steam before first use. **CAUTION:** Ensure that the Drip Tray is located against the front surface of the machine.
- Ensure there is water in the Water Tank. Turn the machine on and wait till machine is up to temperature. Place the Milk Jug on the Drip Tray under the Steam Wand. Ensure the Steam Wand is directed into the Milk Jug.
- Open the Steam Valve for 1 minute, steam will dispense from the Steam Wand. This will rinse the internals ready for first use.
- **NOTE:** The control knob may be harder to turn when the machine is new. This will loosen with use.
- **NOTE:** For cleaning, please refer to the section "Cleaning after each use" and "Cleaning & Descaling".
- These instructions are also available at [www.dualit.com/cino](http://www.dualit.com/cino).

# LIMESCALE WARNING!

**HARD WATER WILL CAUSE LIMESCALE BUILD-UP, RESULTING IN BLOCKAGES THAT WILL CAUSE PERMANENT DAMAGE OR WILL DECREASE THE LIFE OF YOUR MACHINE. TO PREVENT THIS, DESCALE REGULARLY AND USE A WATER FILTER.**

**IMPORTANT NOTICE: PRODUCT FAILURE DUE TO THE BUILD UP OF LIMESCALE IS NOT COVERED BY GUARANTEE.**

## HOW TO MANAGE LIMESCALE BUILD-UP

### Before Use – Know Your Water Hardness:

- Confirm the hardness of your water with your local water company or use the quick reference map as a guide.
- **Find your water company on the OFWAT site ([ofwat.gov.uk/contact-companies](http://ofwat.gov.uk/contact-companies)) and check the water hardness of your area.**
- If you are unable to establish the water hardness of your area, or require further support, contact Dualit Customer Services by emailing [info@dualit.com](mailto:info@dualit.com).



### Descaler - Kilrock: Service-Pro Coffee Machines



Always clean your machine before descaling; see page 16 for cleaning instructions. Dualit recommends using a specific limescale removing solution; coffee machine cleaners will not descale your machine. Scan the QR code to purchase. Descal your appliance regularly according to the Water Hardness Table, in a well-ventilated area to prevent limescale build-up in the machine. See full descale instructions on page 16.



SHOP  
DESCALER

WATER HARDNESS TABLE					
WATER HARDNESS		ACTION FREQUENCY			
Hardness level	CaCO <sub>3</sub> mg/l	Descal	Water Filter		Slow Steam or Drop in Steam Output
			Daily Use	Light Use	
Soft 	0-100	At Least Once A Month or when Indicator Light turns Amber	Replace Every Month	Replace Every 2 Months	Descal Immediately
Medium 	101-200	At Least Once Every 2 Weeks or when Indicator Light turns Amber	Replace Every Month	Replace Every 2 Months	Descal Immediately
Hard* 	201+	At Least Once A week or when Indicator Light turns Amber	Replace Every Month	Replace Every 2 Months	Descal Immediately

\*Never use bottled water.

### During Use - Water Filters

You must use a Dualit Water Filter (CWF1 - available at [www.dualit.com](http://www.dualit.com)) in all water hardness areas. For further information on descaling, please refer to page 16.

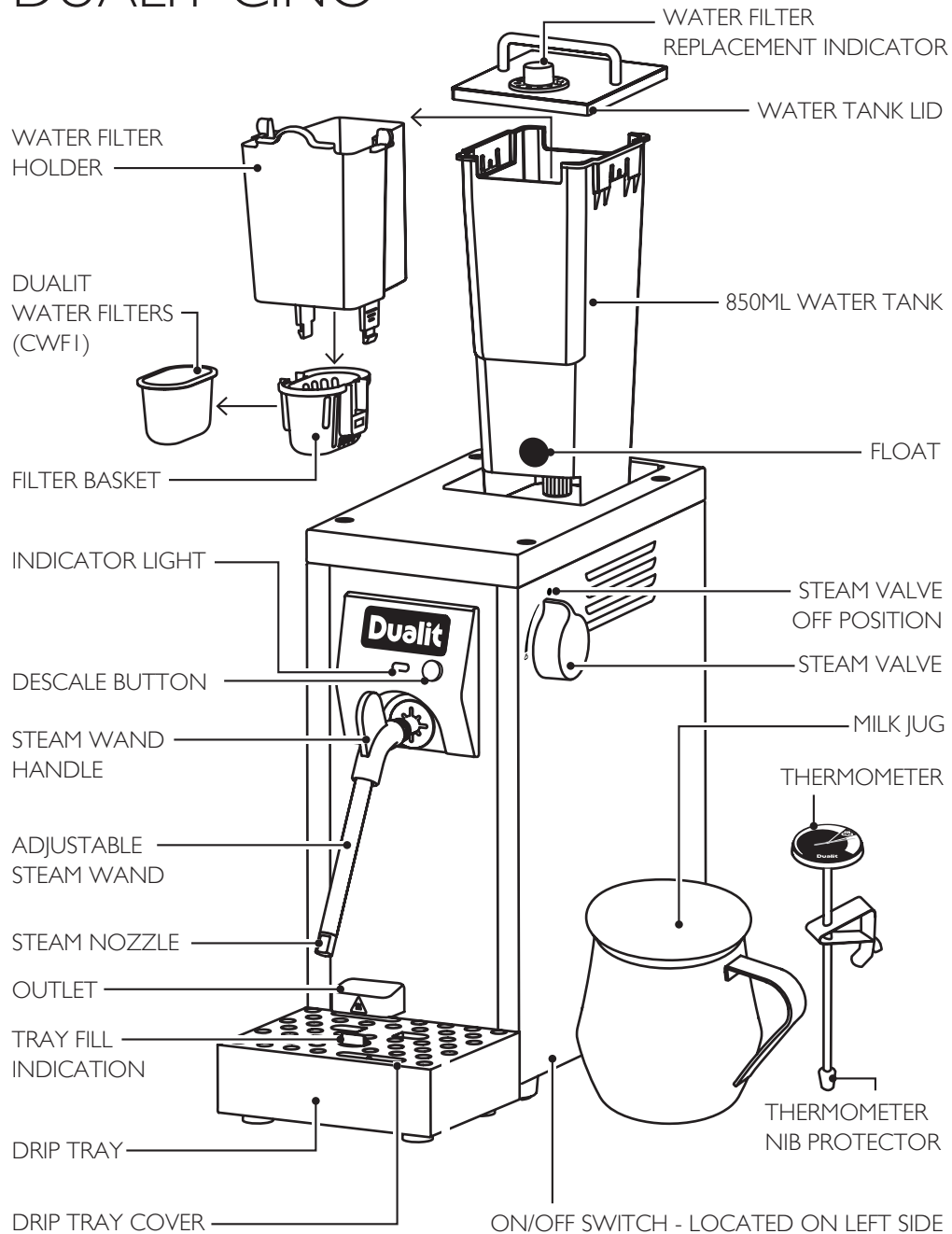
### During Use - Descaler

Dualit recommends using coffee machine descaler (available at [www.dualit.com](http://www.dualit.com)). Your machine is fitted with a descale counter which will indicate when a descale is required. For further information on the indicator light, please refer to page 12. Or for further assistance, contact Dualit's Customer Services by emailing [info@dualit.com](mailto:info@dualit.com). **Warning: Failure to do so will result in permanent damage to your machine.**

- See descale instructions for full descale procedure and further details.
- User must descale using a specific limescale removing solution. Coffee machine cleaners will not descale your machine.

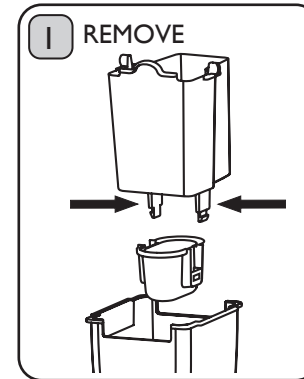
DON'T FORGET TO REGISTER YOUR PRODUCT	WWW.DUALIT.COM/REGISTER	
	OR BY POST	

# KNOW YOUR DUALIT CINO™



# SET-UP

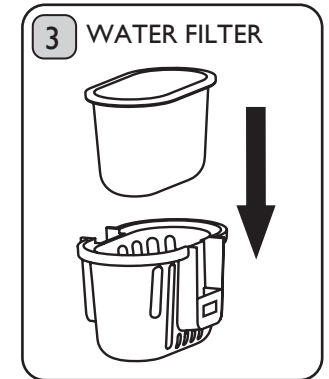
Your Dualit Cino™ is supplied with three Dualit Water Filters (CWF1). Store Dualit Water Filters in a cool, dry place. Only open wrapper just before use. Keep away from children. Remove all packaging from the machine. Ensure there is no debris in the Water Tank or cavity that the Water Tank sits in.



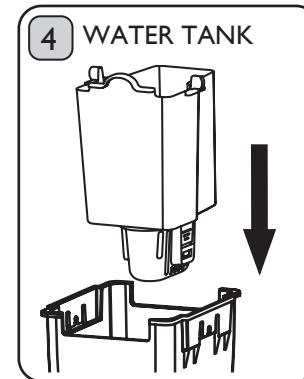
Remove Water Tank Lid. Remove the Water Filter Holder from the Water Tank. Remove the Filter Basket by pinching both tabs on the Water Filter Holder and pull the Filter Basket off.



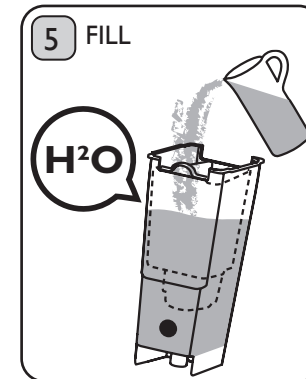
Wash the Water Tank, Water Filter Holder and Filter Basket before first use with warm, soapy water. Rinse well.



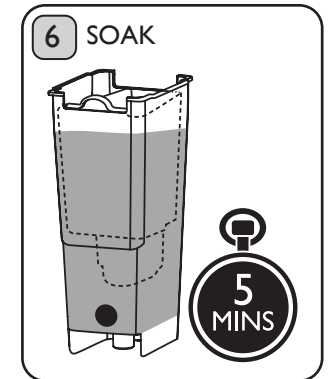
Place one Dualit Water Filter into the Filter Basket, ensuring the rounded end is placed in first. The flat end should sit within the Filter Basket when correctly located.



Click the Filter Basket onto the Water Filter Holder, and then place it back into the Water Tank.



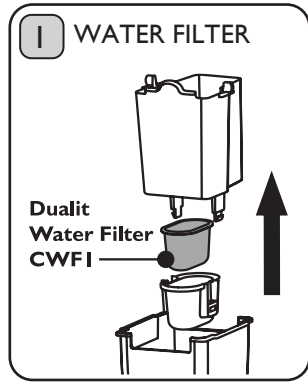
Fill the Water Tank with fresh water until the Dualit Water Filter is submerged. Maximum fill level is the top of the Water Filter Holder. Do not overfill.



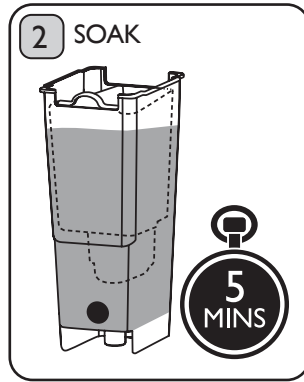
Soak for 5 minutes to activate the Dualit Water Filter. Discard the water. The Dualit Water Filter only needs to be activated before first use. From then on, you can fill Water Tank as normal.

To purchase more Dualit Water Filters visit our website on [www.dualit.com/waterfilters](http://www.dualit.com/waterfilters) or Contact Dualit on 01293 652500.

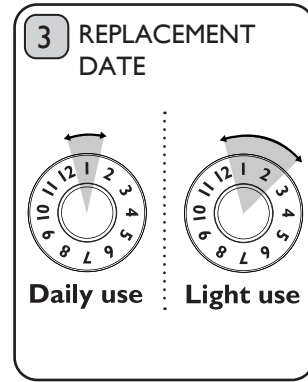
# WATER FILTER REPLACEMENT



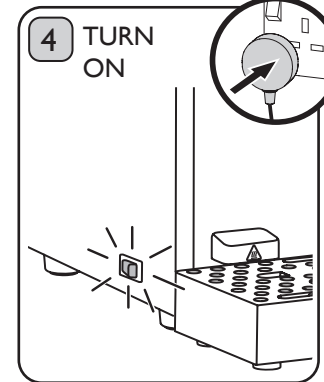
Remove the Water Filter Holder and disassemble. Place 1x Water Filter inside the Filter Basket. Click the Filter Basket back onto the Water Filter Holder and locate in Water Tank.



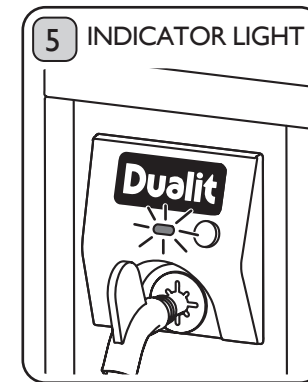
Soak for 5 minutes to activate the Water Filter. Discard the water. The Water Filter only needs to be activated before first use. From then on, you can fill the Water Tank as normal.



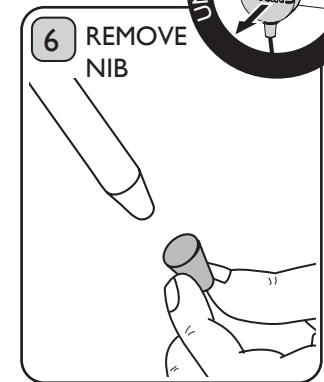
Once Water Filter has been replaced, turn the Water Filter Replacement Indicator to the required month.  
**Daily use:** Replace Water Filter every month.  
**Light use:** Replace Water Filter every two months.



Plug the machine in and turn on. The ON/OFF switch will illuminate Red.

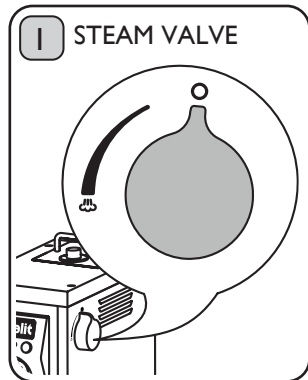


The Indicator Light will flash Green whilst warming and stop flashing when ready to use. If it's Amber or Red, see Quick Reference Guide on page 09.  
 NOTE: The machine may whistle whilst pre-heating. This is normal operation.

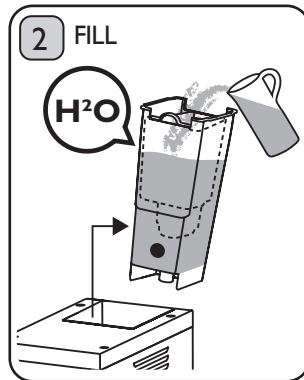


Remove the Thermometer Nib Protector from the Thermometer. Clip the Thermometer onto the side of the Milk Jug.

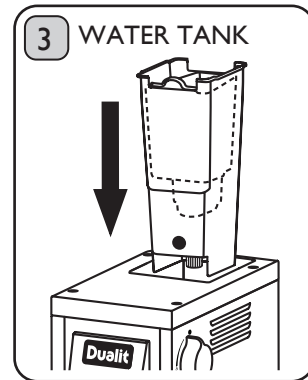
# BEFORE FIRST USE



CAUTION: Ensure the Drip Tray is located against the front of the machine. Ensure the Steam Valve is in the closed position. WARNING: **Risk of Scalding** - Keep hands away from the Outlet at all times.



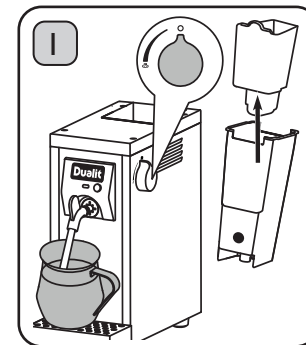
Remove the Water Tank and pour fresh water into the Water Filter Holder. The water will flow through the Filter. Top up as the level drops. Maximum fill level is the top of the Water Filter Holder. Do not overfill.



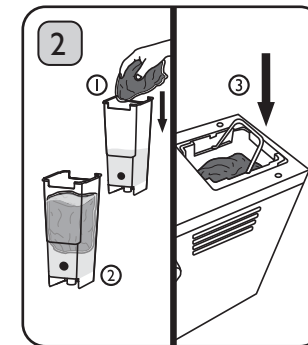
Place the Water Tank into the machine, pressing down firmly. Ensure the Float is facing towards the front. The Water Tank Lid will sit flush with the top surface when the Water Tank is fitted correctly.

# ATTENTION - SETTING UP

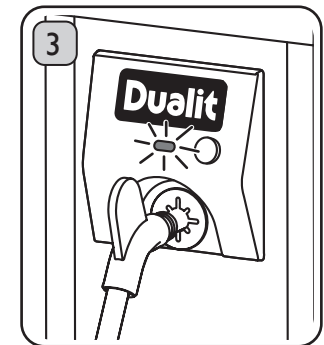
If the Milk Steamer is still not producing steam, the pump may have dried out. Follow the instructions below to prime water into the pump.



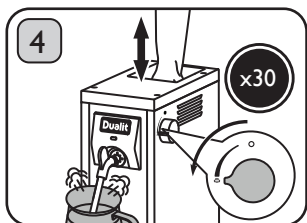
Ensure the Steam Valve is at 0. Turn on by pressing the ON/OFF Switch. Position the Milk Jug below the Steam Nozzle, remove Water Tank, then the Water Filter Holder & set the Water Filter Holder aside.



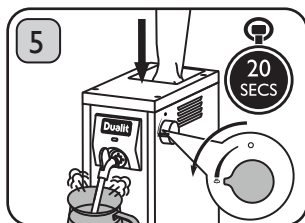
Fill Water Tank halfway (425ml). Place a tea towel in a plastic bag & place it in the Water Tank <sup>(1)</sup>, above the water level to create a tight fit in the Water Tank <sup>(2)</sup>. Place the Water Tank back inside the machine <sup>(3)</sup>.



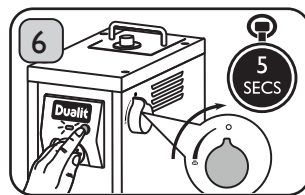
Make sure the Indicator Light is solid green. If the Indicator Light is flashing green, allow the Milk Steamer to warm up. If the Indicator Light is flashing red, hold the Descale Button for 5 seconds.



Turn the Steam Valve fully anti-clockwise. Lift the Water Tank up and down 30 times or until steam comes out of the Steam Nozzle. This will pump water into the machine. CAUTION: Steam and Hot Water from the Nozzle. **Risk of scalding.**



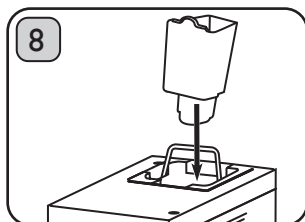
If steam does not come out of the Steam Nozzle, whilst the Steam Valve is still turned fully anti-clockwise, apply downward pressure to the plastic bag in the Water Tank for 20 seconds. Repeat step 4. CAUTION: Steam and Hot Water from the Nozzle. **Risk of scalding.**



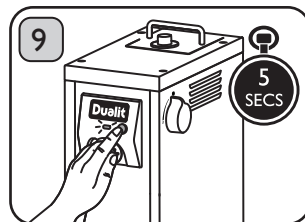
If steam still does not come out of the Steam Nozzle, turn the Steam Valve fully clockwise and press and hold the Descale Button for 5 seconds. The Indicator Light will flash red. Repeat step 4. NOTE: as you have set the machine to descale mode, you will see water instead of steam come out of the Steam Nozzle.



After steam comes out of the Nozzle, turn the Steam Valve clockwise fully (1), then remove the plastic bag & tea towel (2).



With the Water Tank still inside the machine, place the Water Filter Holder back inside the Water Tank.



If the Indicator Light is flashing red, press & hold the Descale Button for 5 seconds. The Indicator Light will be a solid green. Your Milk Steamer is now ready to use.

## INDICATOR LIGHT: QUICK REFERENCE GUIDE:

To help understand each Indicator Light status, see the table below.

INDICATOR LIGHT	MEANINGS
Red and Amber (Flashing)	Re-fill Water Tank.
Green (Flashing/Solid)	Machine is warming up to operating temperature. Once Green illumination is solid, the machine is ready to use.
Amber (Flashing/Solid)	Descale Required.
Red (Flashing/Solid)	Machine in Lock Mode. Carry out mandatory Descale.
Red (Quick Flash)	In Descale Mode.
Green, but no steam.	Steam Valve has been left open when switched on. Close Steam Valve and Indicator Lights will flash. Machine will warm up.

## WARMING MILK USING STEAM

The machine and Milk Jug are capable of steaming between **100 and 600ml** of milk at any one time.



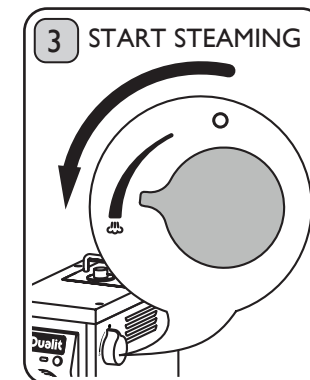
Caution when using Milk Jug as edges may be sharp.



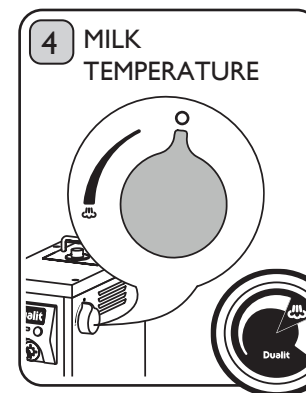
Determine how much milk is required and pour into the Milk Jug. We recommend using a chilled Milk Jug and fresh semi-skimmed milk straight from the fridge, for best results.



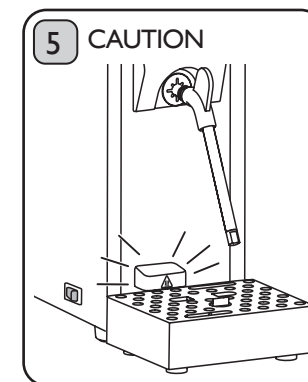
Hold the Milk Jug by the handle, at a slight angle. Lower the Steam Wand under the surface of the milk. Hold jug still, and keep the Steam Wand Nozzle close to the bottom.



Slowly open the Steam Valve to halfway. Pump will start and steam will flow from the Steam Wand Nozzle. To speed up the process, gradually open the Steam Valve, take care not to splash milk.



WARNING: Never lift the Steam Wand Nozzle out of the milk whilst Steam Valve is open. The Steam symbol on the Thermometer indicates recommended milk temperature. When desired milk temperature is reached, close the Steam Valve.



CAUTION: HOT. **Risk of Scalding.** Keep hands away from the Outlet at all times. Some steam and water will expel into the Drip Tray from the Outlet when the Steam Valve has just been closed. This is normal operation.



After each frothing, open the Steam Valve to clean. Immediately wipe the Steam Wand with a damp cloth. WARNING: Steam Wand will be hot. Turn the machine off using the ON/OFF switch and unplug.

# FROTHING MILK

The machine and Milk Jug are capable of frothing between **100** and **300ml** of milk at any one time. Approximately 100ml for Cappuccino and 150ml for Latter per large cup / mug. It is recommend to use a chilled Milk Jug and fresh Semi-Skimmed milk straight from the fridge for best results. Note: Skimmed and Full Fat can also be used.



Add milk to the jug. Holding the Jug by the handle, and at a slight angle, place the tip of the Steam Wand Nozzle 1-2 cm below the surface. The wand should be close to the edge of the jug, not in the centre.



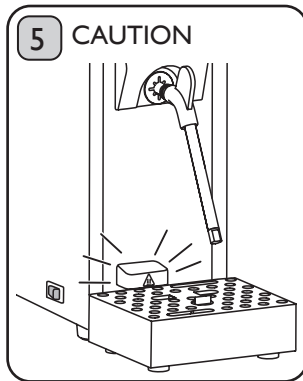
Slowly open the Valve. The steam will flow from the Nozzle and start to rotate the milk like a whirlpool. To speed up the process, gradually open Steam Valve. Take care not to splash the milk.



As the thermometer dial starts to rise, lower the Jug to bring the Nozzle to the surface of the milk. This will start to introduce air and develop the froth. Large bubbles indicate nozzle is raised too high.



Once there is sufficient milk textured, raise the jug and continue until the Steam symbol is reached on the Thermometer Dial. CAUTION: Close the Steam Valve before removing Steam Wand from jug.



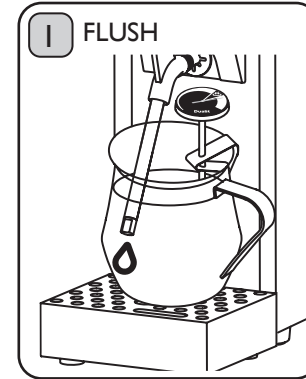
CAUTION: HOT. **Risk of Scalding.** Keep hands away from the Outlet. Steam/Water will expel from Outlet when Steam Valve has been closed. This is normal operation. CAUTION: Steam wand will be hot.



Immediately after frothing, open the Valve and wipe wand to clean. Gently tap Milk Jug against the worktop to collapse any large bubbles. Swirling will mix the milk with the froth. Pour immediately. Turn machine off and unplug.

# CLEANING AFTER EACH USE

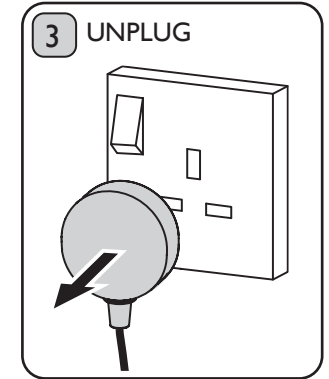
It is important to clean the **DUALIT CINO™** after each use. Make sure the machine is switched off, unplugged and allowed to cool.



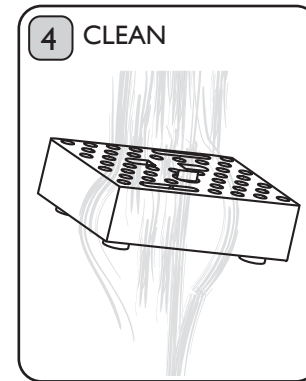
Flush the Steam Wand by dispensing steam to remove any milk residue from inside the Steam Wand after each use.



Thoroughly wipe the Steam Wand to clean off any milk residue with a damp cloth. CAUTION: Steam Wand will be hot.



Unplug the machine, and allow to cool.



CAUTION: Allow Drip Tray to cool down before emptying. Clean Drip Tray with warm soapy water using a non-abrasive pad and dry. Wipe up any Descaler overspill.

**TIP:** A drop in performance of the steam output indicates limescale has formed, user must immediately descale the Cino™ Milk Steamer (see page 16).



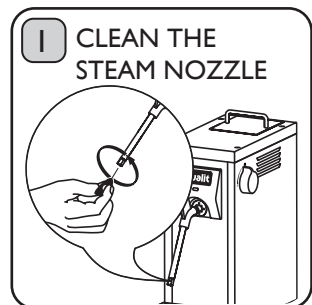
# CLEANING & DESCALING

The machine has a Descale Counter. The machine will advise you when a descale is required based on the number of uses.

If the Indicator Light is **Amber**, machine needs to be descaled immediately.

If the Indicator Light is **Red**, machine has entered Lock Mode, to prevent use until a descale is performed.

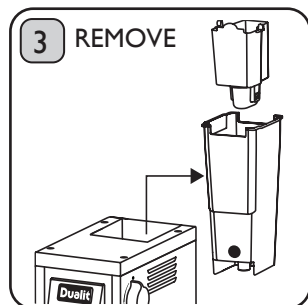
In hard water areas a descale cycle may be required before the Indicator Light turns amber.



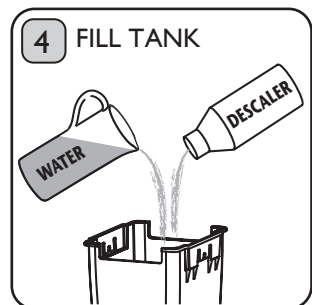
Unscrew the Steam Nozzle anti-clockwise and use a pin to remove dried milk. If too tight to unscrew, use an 8mm spanner. Screw Steam Nozzle back onto the steam wand, ensuring it is tight.



Purchase Coffee Machine Descaler; Coffee Machine Cleaner will **not** descale your machine. Ensure the Steam Valve is closed and ensure the Drip Tray is located against the front of the machine.



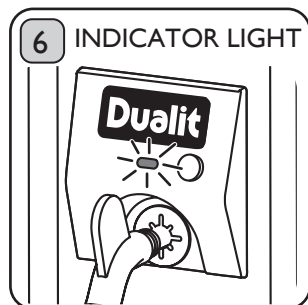
**CAUTION:** Remove Water Tank from machine then remove Water Filter Holder from Water Tank. Do not allow Descale Solution to come in contact with Dualit Water Filter. **Risk of injury or contamination.**



Fill Water Tank with 1 litre of Descaler Solution. Follow instructions & safety precautions on the Descaler packaging; Dualit recommends using Kilrock Espresso & Coffee Machine Descaler. If using granular descaler, ensure it is fully dissolved before switching the machine on.



Place Water Tank back into machine. Place a container with a capacity of more than 2 litres on top of the Drip Tray, located under the Steam Wand. Ensure Drip Tray is located against the front surface of the machine.



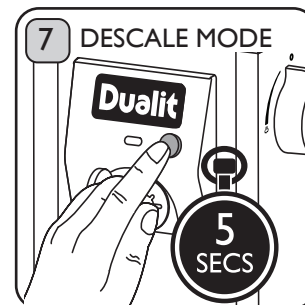
Depending on the machine's status the Indicator Light will be flashing Green, Amber or Red whilst warming up. Once machine is warmed up the Indicator Light will stop flashing and remain on.

# CLEANING & DESCALING

- CONTINUED



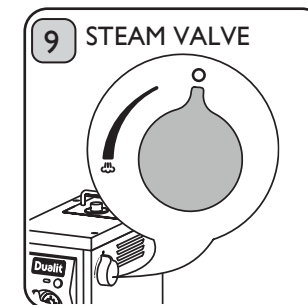
**IMPORTANT: User must only descale the Cino™ Milk Steamer in a well ventilated room.**



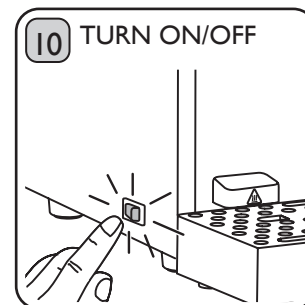
To enter the Descale Mode; Press and hold the Descale Button for **5 seconds**. Once released the Indicator Light will quickly flash red to indicate machine is in Descale Mode.



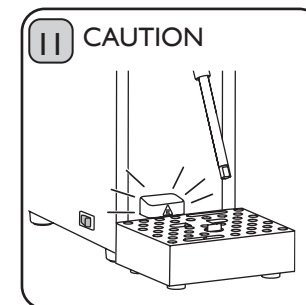
Open Steam Valve; steam will dispense initially, followed by Descaling solution. Dispense all solution. Indicator Light will flash Red and Amber when Water Tank is empty.



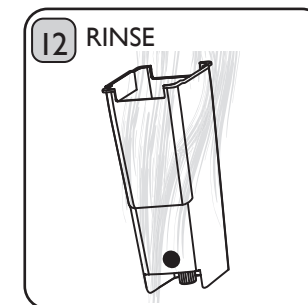
Close Steam Valve, discard Descale solution, following the Descaler instructions. Leave for 10 minutes to allow time for the solution to take effect. Do not switch off the machine.



If the machine is accidentally switched off whilst in Descale Mode, switch back on, the machine will automatically enter back in Descale Mode. Continue process.



**CAUTION: HOT. Risk of Scalding.** Keep hands away from the Outlet at all times. Steam/Water will expel from Outlet when Steam Valve has been closed. This is normal operation.

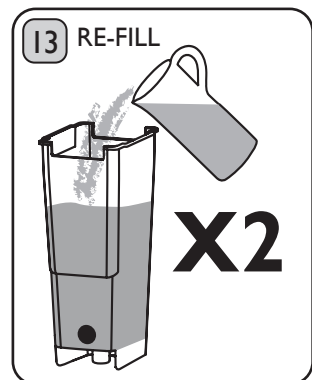


Remove Water Tank and rinse with fresh water. Fill Water Tank with fresh water and place back in the Machine.

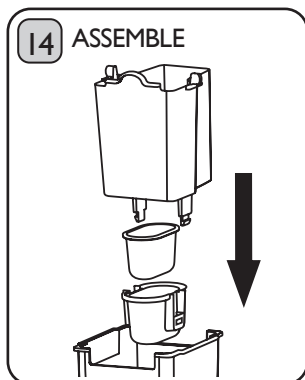
# CLEANING & DESCALING

- CONTINUED

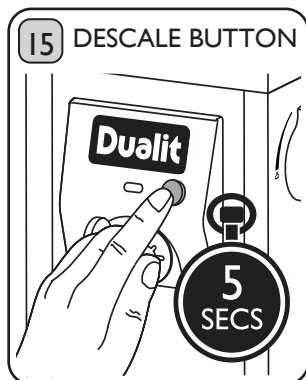
**IMPORTANT:** Do not use Descale mode for any other functionality. It will cause damage to pump as it is not designed to regularly run continuously. Only use descaler in the Cino™ Milk Steamer when in Descale mode.



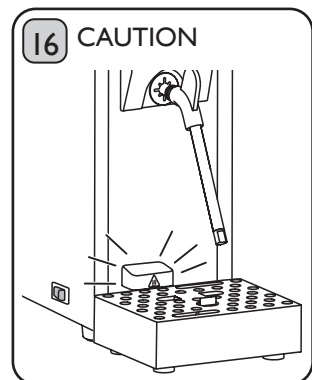
Open Steam Valve and allow all the water in the Water Tank to dispense into the container. Re-fill Water Tank with fresh water and repeat. This will remove any traces of the descale solution within the machine's internals.



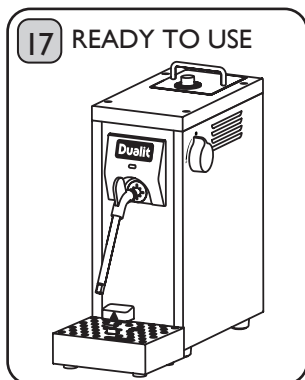
Close Steam Valve. CAUTION: Keep hands away from the Outlet. Remove the Water Tank and re-insert the Water Filter Holder and Dualit Water Filter.



Press and hold the Descale button for **5 seconds** to exit. Indicator Light will flash Green whilst warming up. Indicator Light will stop flashing and remain on when ready.



CAUTION: HOT. **Risk of Scalding.** Keep hands away from the Outlet at all times. Steam/Water will expel from Outlet when Steam Valve has been closed. This is normal operation.



Machine has been successfully descaled and is ready to use again. If there is no improvement in performance, or for a more thorough descaling, please repeat the descale procedure 18

**TIP: Regular descaling can ensure maximum steam efficiency and help prolong the life of the machine. Dualit recommend weekly descaling.**

**Failure to descale will cause blockages, product failure and/ or void your warranty.**


# TROUBLESHOOTING



**IMPORTANT NOTICE: PRODUCT FAILURE DUE TO THE BUILD-UP OF LIMESCALE IS NOT COVERED BY GUARANTEE: DESCAL REGULARLY.**

**\*TO CONTACT CUSTOMER SERVICES, PLEASE EMAIL INFO@DUALIT.COM WITH YOUR MODEL AND SERIAL NUMBERS.**

POSSIBLE CAUSE(S)	SOLUTION(S)
<b>MY MACHINE IS MAKING A LOUD WHISTLING NOISE WHILST PRE-HEATING</b>	
1. The machine is pumping water through the system at high pressure.	1. This is normal operation.
<b>AFTER FROTHING MILK, MY MILK IS NOT FOAMY</b>	
1. Your milk is not cold or fresh enough.	1. It is easier to make froth using fresh, cold semi-skimmed milk.
2. The Steam Wand is blocked with milk residue.	2. Clean Steam Wand and Nozzle and descale machine (see page 16-18). If you are unable to unblock your Steam Wand then contact Dualit on 01293 652500 for advice or spare parts.
3. My milk is burning.	3. Reduce steam flow, rotate Steam Valve clockwise between the steam and off position (see page 10-11) or steam for a shorter period.
<b>NO STEAM OR REDUCED STEAM IS FLOWING FROM THE STEAM WAND</b>	
1. Steam wand is blocked with milk residue.	1. Clean steam wand and nozzle and descale machine (see page 16-18). If you are unable to unblock your steam wand then contact Dualit on 01293 652500 for advice or spare parts.
2. The machine has been turned on with the steam valve left open.	2. Close the steam valve and open again to steam.
3. The machine has not been descaled in the recommended time. The Indicator Light has illuminated <b>RED</b> . The machine has entered Lock Mode.	3. Complete Descale procedure. (See Page 16-18)
<b>UNSURE WHAT THE INDICATOR LIGHT COLOUR MEANS</b>	
<b>RED</b> and <b>AMBER</b> illumination: (Flashing):	1.1 Low water level Indicator. Add a minimum of 500ml to the Water Filter Holder. 1.2. The Water Tank is not correctly seated into position. Press firmly on the Water Tank to locate. The Water Tank will sit flush with the top surface of the machine when the Water Tank is fitted correctly.
<b>GREEN</b> illumination: (Flashing / Solid):	Machine is warming up to operating temperature. Once Green illumination is solid, the machine is ready to use.

<b>AMBER</b> illumination: (Flashing / Solid):	Descalce required and machine is warming up to operating temperature. Recommended to carry out descalce procedure soon otherwise the machine will shortly enter Lock Mode. (See Page 16-18)
<b>RED</b> illumination: (Flashing / Solid):	Lock Mode. Complete Descalce procedure. (See Page 16-18)
<b>RED</b> illumination: (Quick flash):	Machine is in Descalce Mode, to exit, press the Descalce Button for 5 seconds.
<b>DRIP TRAY FILLING TOO QUICKLY</b>	
Each time the Steam Valve is closed, Steam and Water is purged through the machine and expels from out of the Outlet. This is to increase the machines life.	This is normal operation.
<b>STEAM SPEED IS TOO HIGH</b>	
Steam Valve is fully open.	Turn the Steam Valve clockwise to reduce the flow.
<b>I HAVE RUN OUT OF DUALIT WATER FILTERS</b>	
	To purchase more Dualit Water Filters visit our website on <a href="http://www.dualit.com/waterfilters">www.dualit.com/waterfilters</a> or Contact Dualit on 01293 652500.
<b>MY MACHINE IS NOT WORKING – THE LIGHTS ARE OFF AND THE MACHINE CEASES TO OPERATE.</b>	
Machine not plugged in	Ensure the machine's plug is connected to the socket, and socket switch turned on.
Fuse may have failed.	Check and replace fuse. Contact the Dualit customer helpline on 01293 652500.

DON'T FORGET TO REGISTER YOUR PRODUCT	<a href="http://WWW.DUALIT.COM/REGISTER">WWW.DUALIT.COM/REGISTER</a>	
	OR BY POST 	

## GUARANTEE

This appliance is of excellent quality and construction. However, if any defects in materials or workmanship do appear during the relevant guarantee period, we will, at our discretion, either repair or replace the defective parts, free of charge, subject to the terms and conditions of our Guarantee shown below.

This Guarantee covers both parts and labour. Carriage is not included.

Your Guarantee period is as follows:

- 1 year

This Guarantee provides benefits which are additional to, and do not affect, your statutory rights. This Guarantee does not cover the cost of returning the product to the dealer from whom it was purchased or to ourselves. This Guarantee applies only to products sold and located in mainland Great Britain. It does not cover liability in respect of or replacement of plugs, cables or fuses and also does not cover defects due to:

- Failure to use or maintain product in accordance with Dualit's instructions which includes rinsing and wiping after every frothing cycle and descaling. See pages 16-18.
- The product being connected to an unsuitable electricity supply.
- Accidental damage to or abuse or misuse of the product including failure to use the product for its normal intended purposes.
- The product modified, except by Dualit or approved agent.
- Dismantling of or interference with the product.
- Theft or attempted theft of the product.

Before returning any product under this Guarantee, please check that:

- You have followed the product instructions correctly.

- Your mains electricity supply is functional.
- **The defect is not due to a blown fuse.**

If you wish to claim under this guarantee you should:

- Send the product, postage or carriage paid, to the dealer from whom it was purchased or to Dualit direct.
- Ensure that the product is clean and packed carefully (preferably in its original carton).
- Enclose details of your name, address and telephone number and when and where the product was purchased, together with proof of purchase (e.g. a till receipt).
- Give exact details of the nature of the defect.

This Guarantee does not cover any other claims whatsoever, including, without limitation, any liability for incidental, indirect or consequential damage, nor does it cover any claims for conversion or modification or for the costs of repair carried out by any third party without the prior consent of Dualit. If replacement parts are fitted to the product this will not extend the period of the Guarantee.

For further advice contact the Dualit customer helpline on +44 (0)1293 652 500 (09:00 to 17:00 Monday to Friday).

Alternatively, email Dualit at [info@dualit.com](mailto:info@dualit.com) or visit [www.dualit.com](http://www.dualit.com)

SUBSCRIBE

*& Save*

Register & receive a  
**10% DISCOUNT**  
on our coffee range  
with every subscription.

WHAT'S  
INCLUDED?



ESE Pods



Nespresso®  
Compatible\* Capsules



Compostable+  
Coffee Bags

Find out more at [dualit.com/subscriptions](https://dualit.com/subscriptions)



DISCOVER  
CAPSULES

UK ONLY

[www.dualit.com](https://www.dualit.com)



Dualit Limited County Oak Way Crawley West Sussex RH11 7ST  
+44(0)1293 652 500 [info@dualit.com](mailto:info@dualit.com) [www.dualit.com](https://www.dualit.com)